

Olympic Loose Lay Vinyl Plank

DEAR CUSTOMER, Please take a moment to review these installation instructions and plan your installation carefully. Please note that IMPROPER INSTALLATION CAN VOID WARRANTIES. Installation of 100 square feet of flooring is enough to verify quality and acceptance.

*TORLYS Olympic Loose Lay flooring is not suitable for use in SAUNAS or other abnormal use or conditions including, but not limited to, water damage from plumbing, storms, floods and water saturation on the surface or trapped between subfloor and floor.

Olympic Loose Lay is waterproof, however moisture issues should be rectified at the jobsite before installation to prevent damage to the substrate and surrounding structure, and to discourage the growth of mold and mildew.

If encountering difficulty during installation, STOP and contact TORLYS Customer Service at: 1-(800) 461-2573 and ask for the Technical Department.

Thermal shock - very rapid and extreme changes in temperature - may cause damage to the floor. The use of a continuous vapour barrier and proper insulation is mandatory in the crawl space. This product is not intended for 3-season applications.

Closed-in porches, solariums, screened in gazebos - ALL of these can experience rapid and unbalanced changes in the interior environment that cannot be properly controlled. Installation under these conditions is NOT recommended. This product is intended for indoor use only and is warranted as a floor covering.

1) SET UP

To ensure you have sufficient material on hand, calculate the total area of the room and add 5% of material to allow for custom cutting. Forty-eight hours prior to installation, place the closed packages of flooring and the adhesive (if required), in the middle of the room, NEVER against a wall or in a corner, nor near hot or cold air-vents or in direct sunlight. Do not open the packages until you are ready to begin installation. Flooring is to be stored on a flat floor to prevent distortion.

Do not install Olympic Loose Lay flooring until it is acclimatized to the required room temperature of 60°F - 80°F (16°C - 27°C). The Relative Humidity (RH) in the air should be between 35% and 85%; if using adhesive, the RH in the air should be between 35% and 65%.

Inspect each plank before installation. If you find any defects, do not use the plank. Contact your supplier immediately.

Please Note: The Marquee by TORLYS Warranty does not cover labour for installation of planks with visible defects.

PREPARATION

Remove any existing flooring, baseboards, quarter-rounds and thresholds and undercut door jambs using a piece of flooring as a guide. Repair all defects in the subfloor. All existing residual adhesive shall be removed or covered with a high quality self-leveling compound designed for this purpose*

(Important: Old adhesives may contain asbestos. For specific removal instructions, please refer to the Resilient Floor Covering Institute's publication [Recommended Work Practices for Removal of Resilient Floor Coverings](#)).

**Manufacturers such as Mapei have products that meet these criteria for self-leveling and should be contacted for further information.*

CHECK THAT:

- The job-site has been cleaned and cleared of debris that could potentially damage the finish of your Marquee Olympic floor.
- The doors can still open and close after installing the floor.
- Doors may have to be cut to supply sufficient clearance.
- For aesthetic appearance, we suggest that you dry lay the material across the width of the room to ensure that the pieces of the last row are no less than 3" (7.5cm) wide.

TOOLS

- Tape Measure
 - Felt Pen
 - Saw, Utility Knife
 - Straight Edge
 - Mask (3M™ Tekk Protection™ Sanding and Fibreglass Disposable Respirator, 8200HB5-A), or equivalent.
 - 100 pound three-section roller *
 - The appropriate trowel size for the adhesive used *
 - Square
 - Floor Scraper
 - Chalk line
 - Safety Glasses
- * If gluing down.*

2) SUBFLOORS

Repair any defects in the subfloor. Subfloor irregularities should be repaired using a cement based polymer-modified floor leveling compound. Installation over an uneven subfloor will cause premature damage to the floor, telegraphing and make the floor feel unstable. All subfloors must be clean, free of dust, grease, paints, oils, curing compounds, sealers, or any other foreign material.

ALL subfloors must be clean, firm, flat (within 1/8" – 3.2mm in 6ft – 1.8m or 3/16" – 4.8mm in 10ft – 3m), smooth and dry. The substrate must not slope more than 1" – 2.5cm per 6' – 183cm in any direction. The moisture on concrete slabs must be less than or equal to 85% RH with in-situ probes as per ASTM F2170, 14% or less on plywood. The pH of concrete must be between 7 – 9.

Self-Levelling Compounds should be obtained from a quality manufacturer that provides a warranty for this product's use as a flooring underlayment. Failure to have quality floor levelling will result in adhesion failure, ridging over underlayment joints or discolouration of floor planks. Follow the flooring adhesive manufacturer's recommended substrate requirements.

Olympic Loose Lay may be installed over ceramic, terrazzo or a single layer of non-cushioned resilient floors with proper preparation. Existing floors must be firmly attached to the substrate and be clean, firm and flat/level as described above. Fill all embossing or grout joints with the appropriate embossing leveller or patching compound following that manufacturer's instructions. If there is any uncertainty, contact TORLYS Technical Department.

It is essential that the crawl space under subfloors is sufficiently ventilated. Remove any obstacles and provide sufficient ventilation. A 6-mil (0.15mm) poly vapour barrier must be installed on crawl space floor.

Expansion Joints on Concrete Slabs : Expansion joints allow for movement between two concrete slabs. If flooring is required to be installed over a concrete expansion joint, flooring should be cut on top of that expansion joint and the width of that cut should be enough to accommodate the type of transition moulding selected.

Note: this gap or any exposed edge can be finished with a small bead of flexible silicone. Holes, grooves and other imperfections should be filled with a high-quality polymer-modified cement-based patching compound.

Approved Subfloors for Glue down Installation

Concrete Subfloors

Concrete substrates/subfloors must comply with ASTM F710 (Standard Practice for Preparing Concrete Floors to Receive Resilient Flooring) and be free of any contaminants that may interfere with adhesion.

Moisture content and pH of the concrete must meet the requirements above. Electronic (pinless) meter readings are not considered a replacement for an ASTM F2170 in-situ test.

Lightweight concrete (gypsum) shall have a minimum density of 90 lbs/cubic foot and a minimum compression strength of 2500 psi. Lightweight/gypsum based concrete and very porous concrete must be primed with an adhesive primer (such as Mapei Primer-T™) before application of adhesive. Bond tests are strongly recommended.

Wood Subfloors

Wood subfloors should be a standard double-layer construction and a minimum total thickness of 1" (25mm). The finish layer should be 1/4" (6mm) thick, sanded one side and APA or CAN/CSA approved and warranted as a resilient underlay, or an equivalent as specified/warranted by the panel manufacturer. Fasten panels as per the panel manufacturer's instructions. Any failure due to the underlayment is NOT the responsibility of TORLYS. Porous underlayments should be primed (such as Mapei Primer-T™) before application of adhesive.

Examples of NON-Approved Substrates

- Carpeting/Carpet Pad
- Cushion Back Sheet Vinyl*
- Floating Floors
- Hardwood Over Concrete
- Cement Tile Backer Boards
- Ferrous Substrates
- Sleeper Substrates

**Beware that old resilient flooring may contain asbestos and products with asbestos will require specialized removal.*

Non-Recommended Subfloors : Particleboard, flakeboard, chipboard, and any other similar products with low dimensional stability, variable porosity, etc., should not be used as subfloors for gluing down Olympic Loose Lay.

Use only underlayments specifically designed for use under resilient floors.

3) LAYOUT

Check Run Numbers / Manufacture Date

For installations in large open areas, and to avoid noticeable shade variations, do not install material from different runs. Locate the run number/manufacture date on the short ends of the box and verify that all of the material for your job is from the same run. Minor shade variations within the same run contribute to the natural look of Olympic Loose Lay.

The floor should be installed from several cartons at the same time, shuffling planks to insure colour and shade mix. The ideal environment is a temperature of 60°F - 70°F (16°C - 21°C). If using adhesive, the RH in the air should be between 35% and 65% - these conditions should be kept constant while the adhesive cures (5 days).

The floor will be stronger and more stable if the joints are staggered at least 12" (30cm) in each row. Staggered or irregular joints result in less waste and enhance the overall appearance of the floor.

4) INSTALLATION METHODS

LOOSE LAY	FULL SPREAD GLUE DOWN
Up to 250 sq.ft. (23m ²) in areas <u>without</u> rolling loads, temperature fluctuations, direct sunlight or radiant heat.	For areas larger than 250 sq.ft. (23m ²) <u>with</u> rolling loads, temperature fluctuations, direct sunlight or radiant heat.

All commercial applications must be installed as full-spread glue-down.

LOOSE LAY PROCEDURE

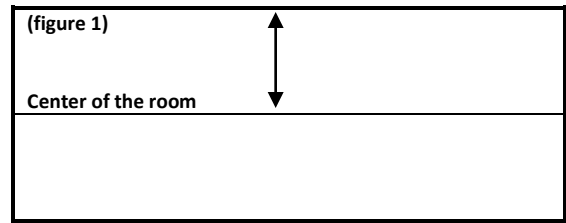
Olympic Loose Lay can be installed without adhesive in areas up to a maximum of 250 sq. ft. (23m²), except for areas that are subject to substantial temperature swings or high traffic areas including rolling loads. In this case a full spread glue down installation method is required. For loose lay installations, measure and cut fill pieces net as to not leave an expansion space and do not force fit into position.

INSTRUCTIONS

INSTALLATION

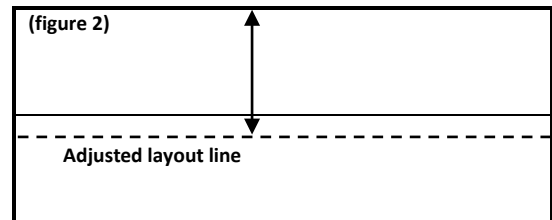
Plan the layout of the room:

Find the centre point and mark it with a chalk line. (figure 1).



Measure the distance from the centre line to the wall, parallel to the direction of the plank. Divide that measurement by the width of the plank. If less than 1/2 of the width of the plank remains for the last row, adjust the centre line to compensate. This will reduce the potential need to cut a narrow piece of flooring against the wall. (figure 2).

All perimeter cuts should be a minimum 12" (30cm) in length and 3" (7.5cm) in width.



Note: We recommend that the stagger between the head joints should be minimum 12" (30cm). For best aesthetics do not stair step the flooring across the room.

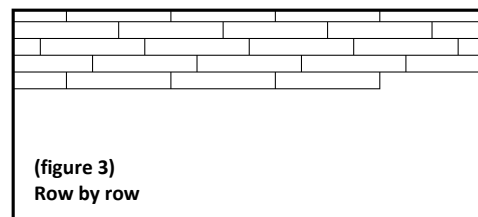
INSTALLING THE FLOOR

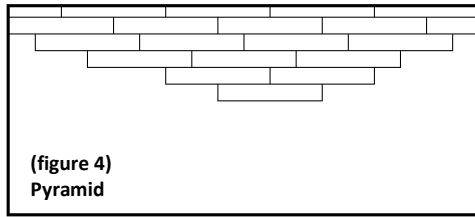
Install a row of planks tight together in a straight line as close to the starting wall as possible, parallel to the adjusted layout line.

Using a divider or scribing tool, mark and cut the first row of material to follow the contour of the starting wall at the width determined from your layout.

Now place the first row against the wall.

Installation can be done row by row (figure 3) or in a Pyramid shape. (figure 4)





To install the final row measure and mark the plank to the correct width by scribing with a divider or another plank using the overlap method.

Baseboards/quarter rounds can now be installed.

Never attach the baseboard/quarter round to the floor itself. Finish around pipes with pipe collars or flexible silicone.

Where no mouldings or baseboards can be installed, or where undercutting is not an option, the cut edges can be covered with flexible silicone seal.

Vacuum and then clean the floor with the use of a TORLYS Cleaning Kit.

GLUE-DOWN PROCEDURE

Select which type of adhesive you will use based on your installation requirements.

TORLYS Smart Glue is a wet-set adhesive, allowing for some adjustment during installation (working time approximately 45 minutes); forms a stronger, permanent bond. Must be used on vertical (eg., risers or walls) or ramp applications.

TORLYS Pressure Sensitive Adhesive is a dry-lay adhesive, giving excellent initial grab – allowing you to immediately stand on the installed floor. Has excellent working time (4 hours). Adjustment after placement is difficult. Should not be used on vertical (eg., risers or walls) or ramp applications.

IMPORTANT: Flash/open time is the waiting time required before installing flooring. Working time is the window of time for the adhesive to accept flooring. These times may vary depending on type of glue, temperature, humidity, substrate porosity, trowel size and jobsite conditions. Trowel sizes may vary depending on substrate and the site conditions.

NOTE: It is the responsibility of the installer to determine whether or not the subfloor to be covered is porous.

To determine if a subfloor is porous, place two droplets of water in various areas. If the subfloor is porous, the water will be absorbed within a few minutes.

The use of an adhesive primer may be necessary on extremely porous subfloors or difficult to bond to surfaces.

Gypcrete or substrates with excessive chalking must be cleaned and then also primed with a product such as Mapei Primer T™ to ensure proper bonding.

a) TORLYS Smart Glue

TORLYS Smart Glue Water Based Acrylic Flooring Adhesive, requires the use of a 1/16" x 1/16" x 1/16" **square notched** trowel for installations over porous and non-porous substrates. Follow the installation instructions provided by TORLYS on the container.

IMPORTANT: when installing over non-porous substrates using TORLYS Smart Glue, additional flash/open time is required – refer to the container instructions.

b) TORLYS Pressure Sensitive Adhesive

TORLYS Pressure Sensitive Water Based Acrylic Flooring Adhesive, requires the use of a 1/16" x 1/16" x 1/16" **square notched** trowel for installations over porous and non-porous substrates. Follow the installation instructions provided by TORLYS on the container.

Smart Glue/Wet Set Application

The layout must be set up so the flooring can be installed without kneeling on the freshly installed planks. This prevents shifting, adhesive displacement and adhesive oozing from the joints. This can be accomplished by starting away from the door and working toward the exit. Dry fit a row of planks tight together in a straight line as close to the starting wall as possible, parallel to the adjusted layout line. Using a divider or scribing tool, mark and cut the first row of material to follow the contour of the starting wall at the width determined from your layout. Start spreading the glue using the recommended trowel*. Hold the trowel at a 60-degree angle to the subfloor, making sure the subfloor is covered 100% with adhesive, without voids or puddles. Only apply as much adhesive as can be covered within the allotted working time. *NOTE: Replace trowels with worn notches. Do not re-notch worn trowels.

Install flooring after the appropriate flash/open time:

IMPORTANT:
WORKING TIME OF ADHESIVE MUST BE OBSERVED

TORLYS	<u>Approximate</u>	<u>Working</u>
Smart Glue	<u>Flash/Open Time</u>	<u>Time</u>
Porous	5 - 10 minutes	45 minutes (approximate)
Non-Porous	Until Dry to Touch	45 minutes (approximate)

Do not spread more adhesive than can be worked within the appropriate time frame.
Do not spread wet lay adhesive farther than you can reach.
For coverage refer to the label on the adhesive container.
Lay the first row of planks into the adhesive, pressing firmly into the adhesive bed to ensure adequate transfer.
Installation can be done row by row (**figure 3**) or in a pyramid shape. (**figure 4**)

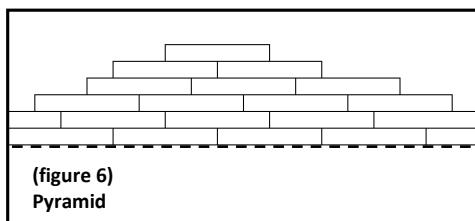
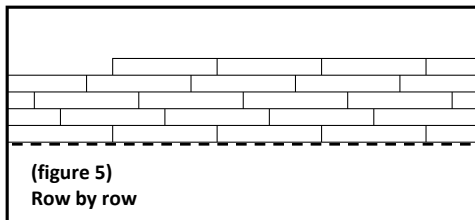
To install the final row measure and mark the plank to the correct width by scribing with a divider or another plank using the overlap method.

TORLYS Pressure Sensitive Application

Start spreading TORLYS Pressure Sensitive adhesive from the layout line in the centre of the room and allow to dry to the touch (approximately 20-45 minutes). Do not spread more adhesive than can be covered within the working time (4 hours).

TORLYS Pressure Sensitive Adhesive	Approximate Flash/Open Time	Working Time
	Until Dry to Touch	4 hours (maximum)

Lay planks starting from the layout line either row by row or pyramid fashion (**figures 5 and 6**).



The dry-lay method makes it possible to work on top of freshly installed material without compromising the installation.

5) COMPLETING THE INSTALLATION

Glued down flooring must be rolled immediately after the installation utilizing a 100 pound three-section roller; use a hand roller in areas not reached with the 100-lb roller. After the floor adhesive has set (minimum 24 hours), you can install baseboards and/or quarter rounds.

Never attach the baseboard/quarter round to the floor itself. Finish around pipes with pipe collars or flexible silicone.

Where no mouldings or baseboards can be installed, or where undercutting is not an option, the cut edges can be covered with flexible silicone seal.

Post Glue down Installation:

Prevent all traffic for a minimum of 24 hours. Restrict heavy traffic and rolling loads for a minimum of 72 hours after installation. Do not wash or begin wet maintenance procedures on the floor for a minimum of 5 days after installation to allow the adhesive to properly cure. Vacuum and then clean the floor with the use of a TORLYS Cleaning Kit.

6) INSTALLATION OVER RADIANT HEAT

IMPORTANT: Must be installed as full spread glue-down

When installing over an in-floor radiant heat system, maintain the subfloor temperature at 60 - 65°F (15 to 18°C) for 24 hours before, during and 48 hours after the installation. The surface temperature of the subfloor should never exceed 80°F (27°C).

For details and limitations, please check the "*TORLYS Radiant Heat Warranty and Installation Instructions*".

Visit our website at: www.torlys.com, for detailed information.

7) PREVENTATIVE MAINTENANCE

To ensure the full benefit of your Olympic Loose Lay floor and to extend its beauty for years to come, we recommend the following preventative maintenance suggestions:

- Keep several planks of Olympic Loose Lay post-installation for repair or evaluation purposes. Also keep a list of maintenance products used on the floor.
- **Install floor protectors** on furniture legs to protect against scratches and dents. These furniture pads should have no wrinkles and be made of soft, non-staining material (e.g. felt pads); the felt pads should be of adequate size to support the weight of the furniture and a minimum of 1" (2.5 cm) in diameter. The floor protectors should sit flat on the floor and be inspected periodically for cleanliness and wear.

For heavy pieces of furniture (e.g. couches) the use of coaster-cups is recommended.

- **Do not drag furniture** or other heavy objects on the floor. Avoid high heels or shoes that need repair. Some types of high heel shoes can severely damage the surface of any floor covering.
- **Close your curtains or blinds** where continuous or extreme sunlight will shine on your floor. Also, UV protection in windows will help with the performance of your furnishings. A combination of heat and sunlight can cause most furnishings and flooring to fade or change colour.
Extreme direct sunlight may cause Olympic Loose Lay flooring to buckle, shift, fade or discolour.
- **Sweep and vacuum floor regularly.**
- **Avoid sand and grit build up.**
At doorways and areas of heavy wear, use protective mats or rugs that are marked “non-staining”.
For dry maintenance, use a dust mop, vacuum cleaner or dry cloth. For damp maintenance, **use the TORLYS Cleaning Kit**, available from your Authorized Dealer, and follow the maintenance instructions on the container.

Basic cleaning is with a damp cloth. Excess water can cause a slip and fall hazard.

IMPORTANT: To keep your warranty valid, use TORLYS recommended maintenance products and follow TORLYS maintenance instructions. For more information on maintenance products and instructions visit our website at: www.torlys.com.

Head Office: TORLYS Inc.,
1900 Derry Road E., Mississauga, Ontario, L5S 1Y6 Canada
www.torlys.com